

JOHANN JOSEPH FUX

(um 1660–1741)

Missa in C

K 47 (FuxWV IV.1.21)

Cornetto ripieno

Fux concertato Nr. 8
Austrian Centre for Digital Humanities and Cultural Heritage
2022, Version Juli 2023
www.fux-online.at
© CC-BY-NC 4.0 de

A large, stylized, black signature of Johann Joseph Fux, written in a cursive script. The signature is positioned at the bottom of the page, with the word 'CONCERTATO' written in a serif font above it. The signature is enclosed within a large, thin, black oval shape.

CONCERTATO

8

Cornetto ripieno

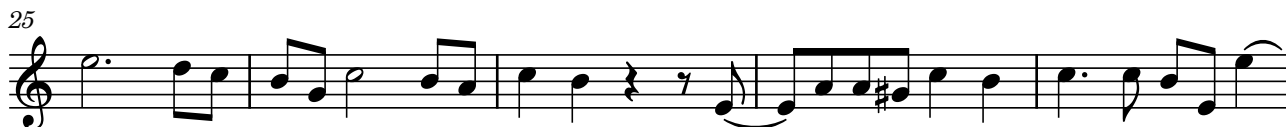
Missa in C (K 47)

J. J. Fux

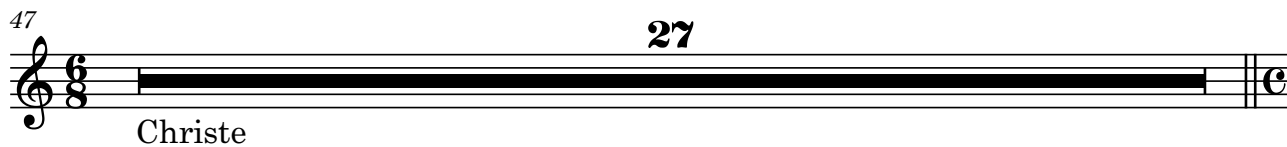
1. Kyrie

Andante

2



47 **27**



Christe

74 **Andante**
3



Kyrie

81



85



91



97



Cornetto ripieno

2. Gloria

Andante

3

Gloria

11 Adagio

Et in terra

17 Andante

22

26

Laudamus (T. 22-47)

48 Tutti

Gratias

56

63

70

21

Domine Deus (T. 70-90)

Allegro

91 **2**

 Qui tollis

97

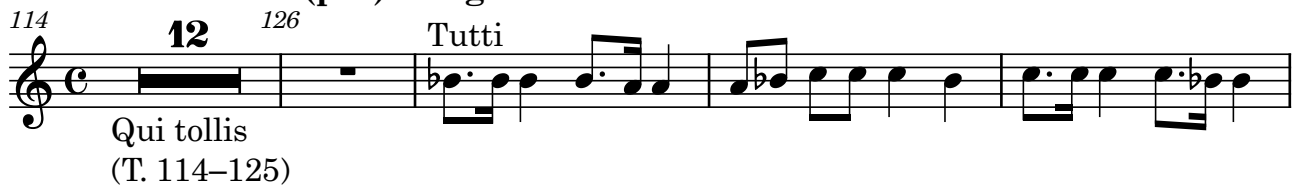

101


Adagio

106 **3**

 Miserere

Andante (più) Adagio

114 **12** ¹²⁶ Tutti

 Qui tollis
 (T. 114–125)

130

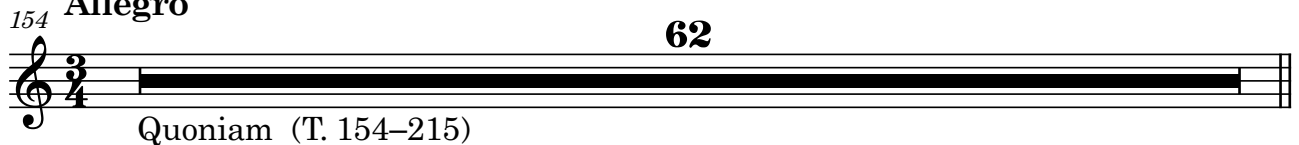

134 **Allegro** **3**


Adagio

142 **3** Tutti


148 **2**


Allegro

154 **62**

 Quoniam (T. 154–215)

Allegro

6

216

Cum sancto A San - - - - - cto

226

231

236

5 A Cum (Sancto)

245

249

254

3. Credo
v.s.

3. Credo

Andante

4

11

18

25

44

73

2

Genitum

79

83

Adagio

14

32

Qui propter nos (T. 85–98) Et incarnatus (T. 99–128)

Crucifixus (T. 129–161)

Tacet

Allegro

162

3

Et resurrexit

170

175

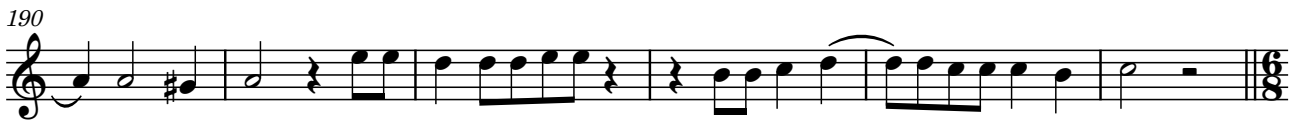
180

185



Musical staff 185-189, treble clef, common time. Measures 185-189.

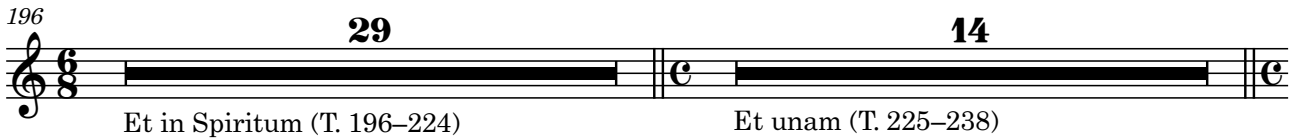
190



Musical staff 190-195, treble clef, common time. Measures 190-195.

196

29 **14**



Musical staff 196-238, treble clef, 6/8 time signature. Measures 196-238. Includes section markers 29 and 14.

Et in Spiritum (T. 196–224) Et unam (T. 225–238)

239

3

Andante



Musical staff 239-246, treble clef, common time. Measures 239-246. Includes section marker 3 and tempo marking Andante.

Et vitam A Et vi - tam ven - tu - (ri)

247



Musical staff 247-258, treble clef, common time. Measures 247-258. Includes section marker 8 and dynamic marking s.

(a) - - (men)

259



Musical staff 259-263, treble clef, common time. Measures 259-263.

264



Musical staff 264-268, treble clef, common time. Measures 264-268.

269



Musical staff 269-273, treble clef, common time. Measures 269-273.

274



Musical staff 274-278, treble clef, common time. Measures 274-278.

279



Musical staff 279-283, treble clef, common time. Measures 279-283.

284



Musical staff 284-287, treble clef, common time. Measures 284-287.

288



Musical staff 288-292, treble clef, common time. Measures 288-292.

5. Agnus Dei

Adagio

13

S mi - se - re - re no - bis.

21 **10**

Dona nobis Do - na no - bis pa - cem,

41 **14**

do - na no - bis pa - cem.

75 **3**

Quelle:
A-Wn Mus. Hs. 16118

Besetzung:
2 Clarini (C)
Timpani (C-G)
2 Violini
Viola Ripieno
Cornetto Ripieno
2 Tromboni (Concertati im Gloria)
Fagotto ripieno e Violoncello ripieno
Soprano, Alto, Tenore, Basso Concertato (I und II im Crucifixus)
Soprano, Alto, Tenore, Basso Ripieno
Continuo (Violoncello, Violone, Organo, Maestro di Capella)

Partituredition: Erarbeitung im Rahmen des Editionspraktikums im Sommersemester 2022 an der Gustav Mahler Privatuniversität für Musik (Leitung: Ramona Hocker)

Kyrie: Luka Ropret

Gloria: Jurij Gracej, Alma Portič,
Laura Espinoza-García, Barbara Juteršek,
Minseo Choi, Enora Léger

Credo: Carolin Anna Pichler,
Constanza Ikei, Elisabeth Mair
Ramona Hocker

Sanctus: Younju Bang, Jimin Han

Agnus: Theresa Aichner

Redaktion und Layout: Elisabeth Mair

Erstversion: November 2022

Überarbeitete Version: Ramona Hocker, Juli 2023